



Hazard Controls & PPE

A Safety Discussion

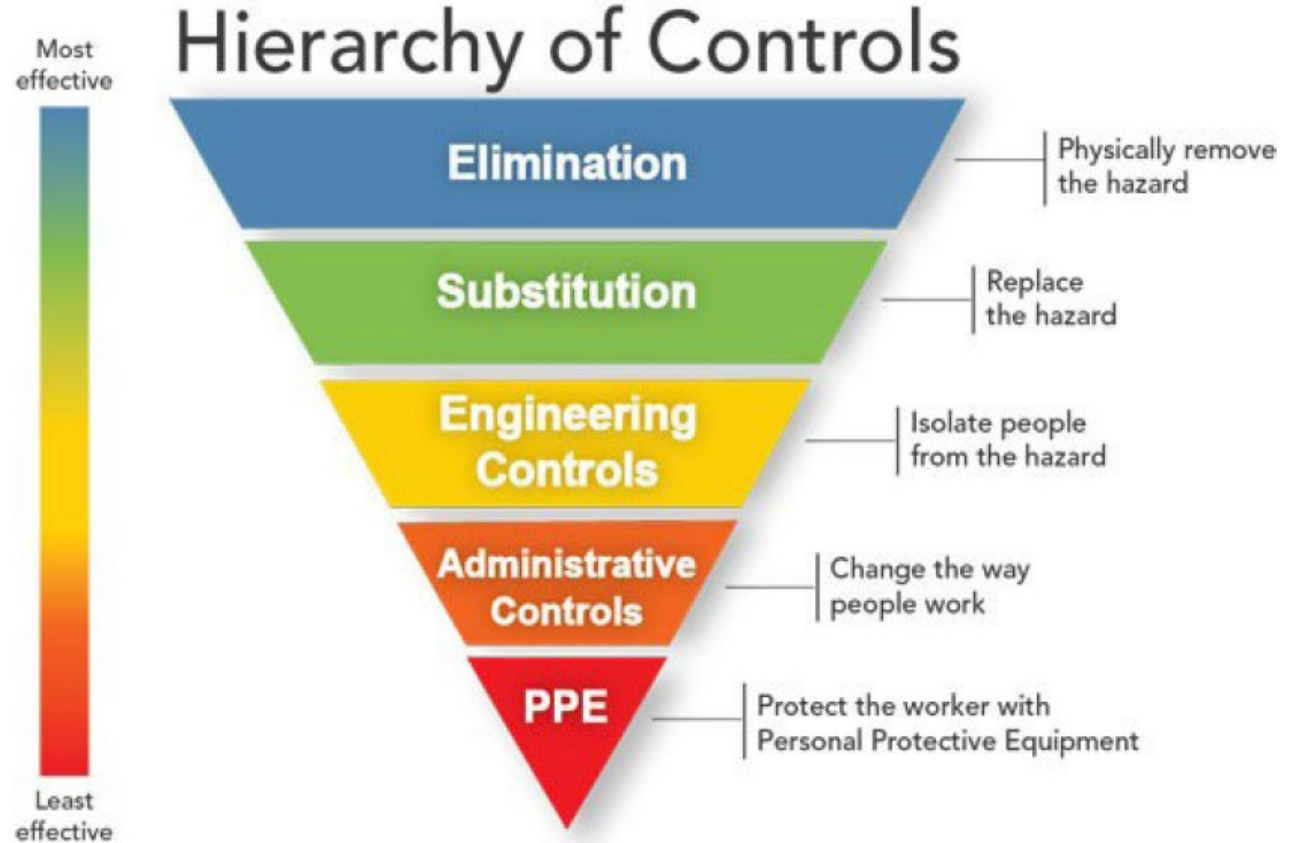


Introduction

- ◇ Hazard Controls
- ◇ PPE as hazard control
 - ◇ Foot & Hand
 - ◇ Eye and Face
 - ◇ Ear & Hearing
 - ◇ Airway & Respiratory

Hierarchy of Controls

- ◇ Eliminate
- ◇ Substitute
- ◇ Design
- ◇ Warn/ train
- ◇ Protect



Source: NIOSH.

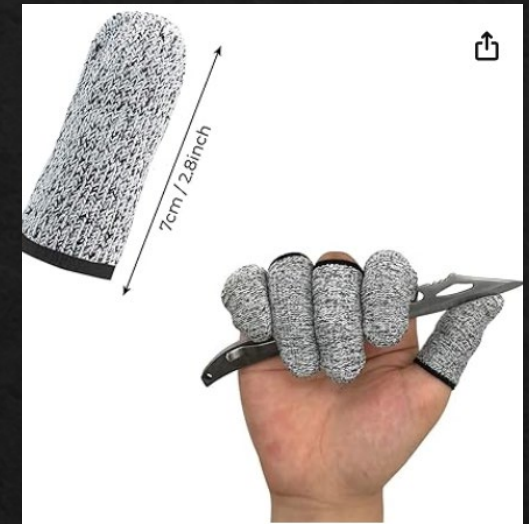
Feet

- ◆ Pick the right protection (and controls) for the task, fit
- ◆ Choose footwear according to the hazard
- ◆ What kinds of injuries can happen to the foot and how?
- ◆ CSA Certification & Ratings



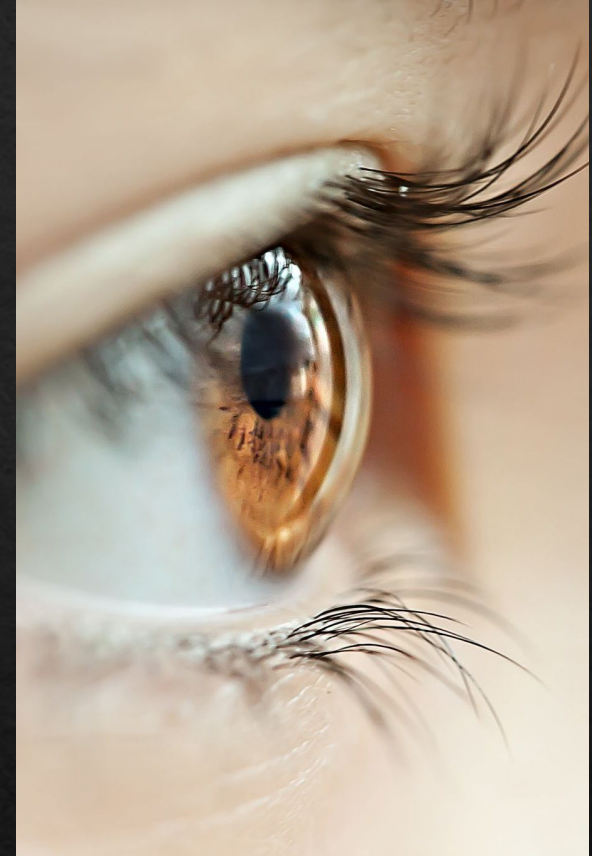
Hands and fingers

- ◆ Pick the right protection (and controls) for the task, fit
- ◆ What kinds of injuries can happen to the hands and fingers?
- ◆ Protection...remember this is the lowest on the hierarchy of controls...



Face and eyes

- ◆ Pick the right protection (and controls) for the task, fit
- ◆ What kinds of injuries can happen to the face and eyes and how?
- ◆ Protection is essential
- ◆ Classes of protection



Ears & Hearing

- ◇ Pick the right protection (and controls) for the task, fit
- ◇ What kinds of injuries can happen to the ears and how?
- ◇ Noise levels (typical)
 - ◇ Table Saw...75-85db
 - ◇ Drill Press...75-90db
 - ◇ Dust Collector...85-95db
 - ◇ Band saw...90-100
 - ◇ Shop Vac...95-105



Respiratory

- ◇ Pick the right protection (and controls) for the task, fit
- ◇ What kinds of injuries can happen to the lungs, airway and how?
- ◇ N95 vs KN95 vs KF94 vs R99 vs P100...alphabet soup with numbers!
- ◇ Mask Types
 - ◇ Single/limited use vs multi-use, replaceable filters
 - ◇ Cone – nose & mouth vs full face
 - ◇ Self-contained breathing devices
 - ◇ Cartridge-type



Thank You

- ◆ Summary
- ◆ References
 - ◆ Construction Safety Association of NS
 - ◆ NSCC OH&S Committee
 - ◆ NIOSH
 - ◆ Acklands-Grainger
- ◆ Questions & Comments

